

# Suffolk County Profile 2013

*A collection of recent demographic, social, economic and agricultural data*

Compiled by Jan Vink

Assisted by Joe Francis, Sutee Anantsuksomsri, Nij Tontisirin, Johannes Plambeck



**Cornell University**  
Cooperative Extension



This profile is a part of a set of profiles generated for each county in New York State. The profiles were developed and generated by the Cornell Program on Applied Demographics. The work is sponsored by Cornell Cooperative Extension and promoted with webinars and workshops in coordination with the Community & Regional Development Institute.

Cornell Program on Applied Demographics:

The Program on Applied Demographics (PAD) brings skills in demographics, economics, statistics, data gathering and data analysis together to provide a variety of organizations with data, information and advice.

For more information: <http://pad.human.cornell.edu/>

Cornell Cooperative Extension:

Cornell Cooperative Extension (CCE) puts knowledge to work in pursuit of economic vitality, ecological sustainability and social well-being. We bring local experience and research based solutions together, helping New York State families and communities thrive in our rapidly changing world.

For more information: <http://cce.cornell.edu/>

Community & Regional Development Institute:

The Community & Regional Development Institute (CaRDI) supports informed decision making for residents and communities in New York State through applied research and education.

For more information: <http://cardi.cornell.edu/>

All profiles are freely downloadable as PDF documents on the PAD website:

<http://pad.human.cornell.edu/profiles/index.cfm>

## Contents

Contents .....	2
1 Reference Maps .....	4
2 Population density and Urban Areas Map .....	6
3 Total Population .....	7
3.1 Historic and projected .....	7
3.2 Change since previous Census .....	7
3.3 Annual population estimates .....	8
3.4 Percentage sub county change 2000-2010 .....	9
4 Population by age .....	11
4.1 Historic and projected population pyramids .....	11
4.2 Selected age groups .....	12
4.3 Median age: comparison between areas .....	14
5 Race .....	15
5.1 Total and household population by race .....	15
5.2 Race composition by age .....	15
6 Housing units .....	16
6.1 Characteristics .....	16
6.2 Historical data on number of housing units and occupancy status .....	17
7 Education .....	18
7.1 Enrollment by level of school .....	18
7.2 Enrollment by age .....	18
7.3 Percentage age 18-24 enrolled in college .....	18
7.4 Educational attainment .....	19
8 Language spoken at home .....	19
9 Labor Force Characteristics .....	20
9.1 Labor force, employment and unemployment .....	20
9.2 Annual unemployment rate .....	21
9.3 Monthly unemployment rate .....	21
9.4 Employment and number of jobs .....	22
9.5 Class of worker .....	22
9.6 Jobs by industry sector .....	23
10 Household Income .....	24
10.1 Distribution .....	24
10.2 Median household income: Trends over time .....	25
10.3 Median household income: Comparison between areas .....	26
11 Poverty .....	27
11.1 Poverty characteristics .....	27
11.2 Poverty: Trends over time: Count .....	28
11.3 Poverty: Trends over time: Rate .....	28
11.4 Poverty rate: comparison between areas .....	29
12 Agriculture .....	30
12.1 Number of farms and land in farms .....	30
12.2 Farm Operator Characteristics .....	30

12.3 Map of type of crop ..... 31

12.4 Estimated acreage by crop ..... 32

13 Climate ..... 33

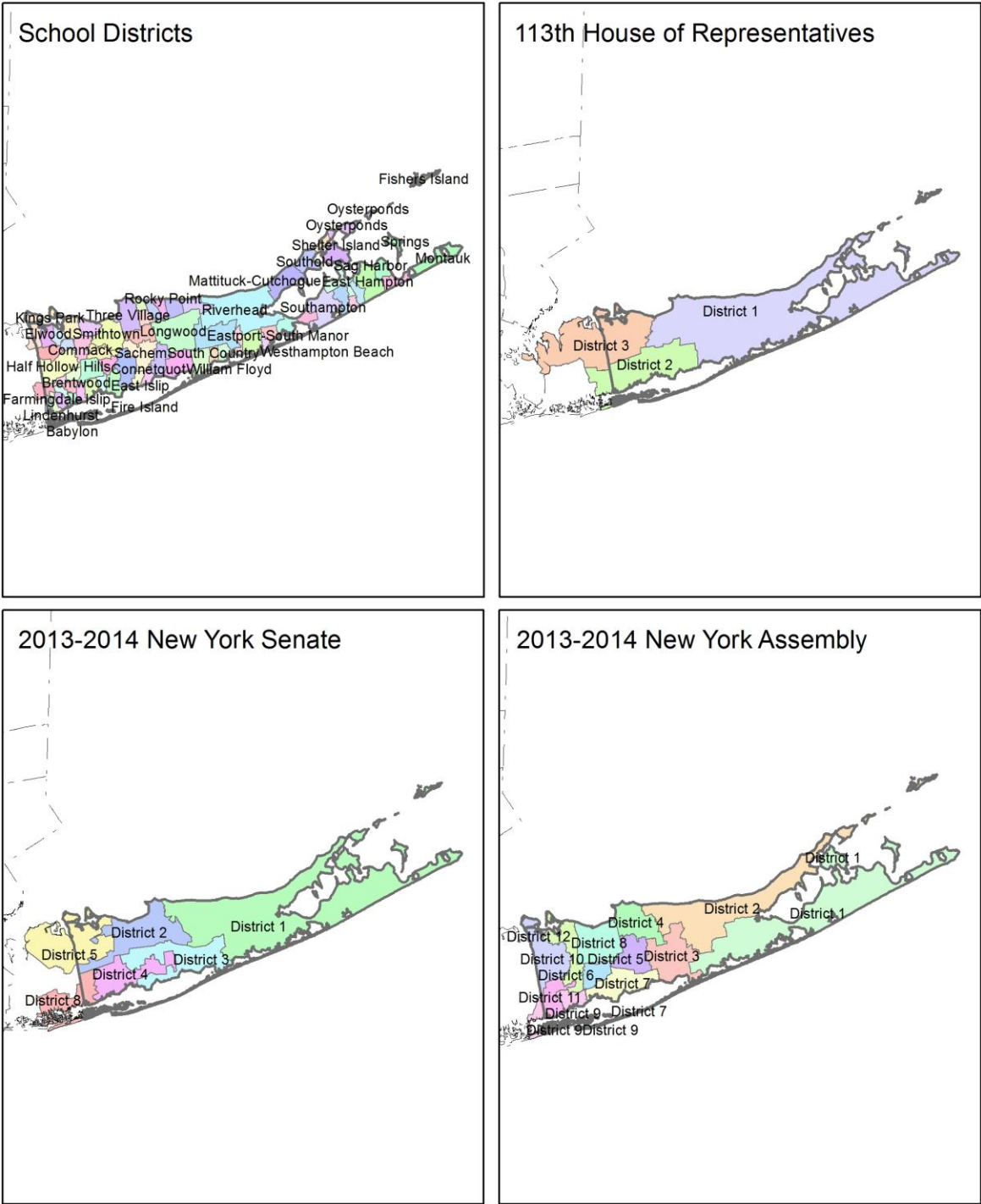
14 Glossary..... 34

15 References ..... 37

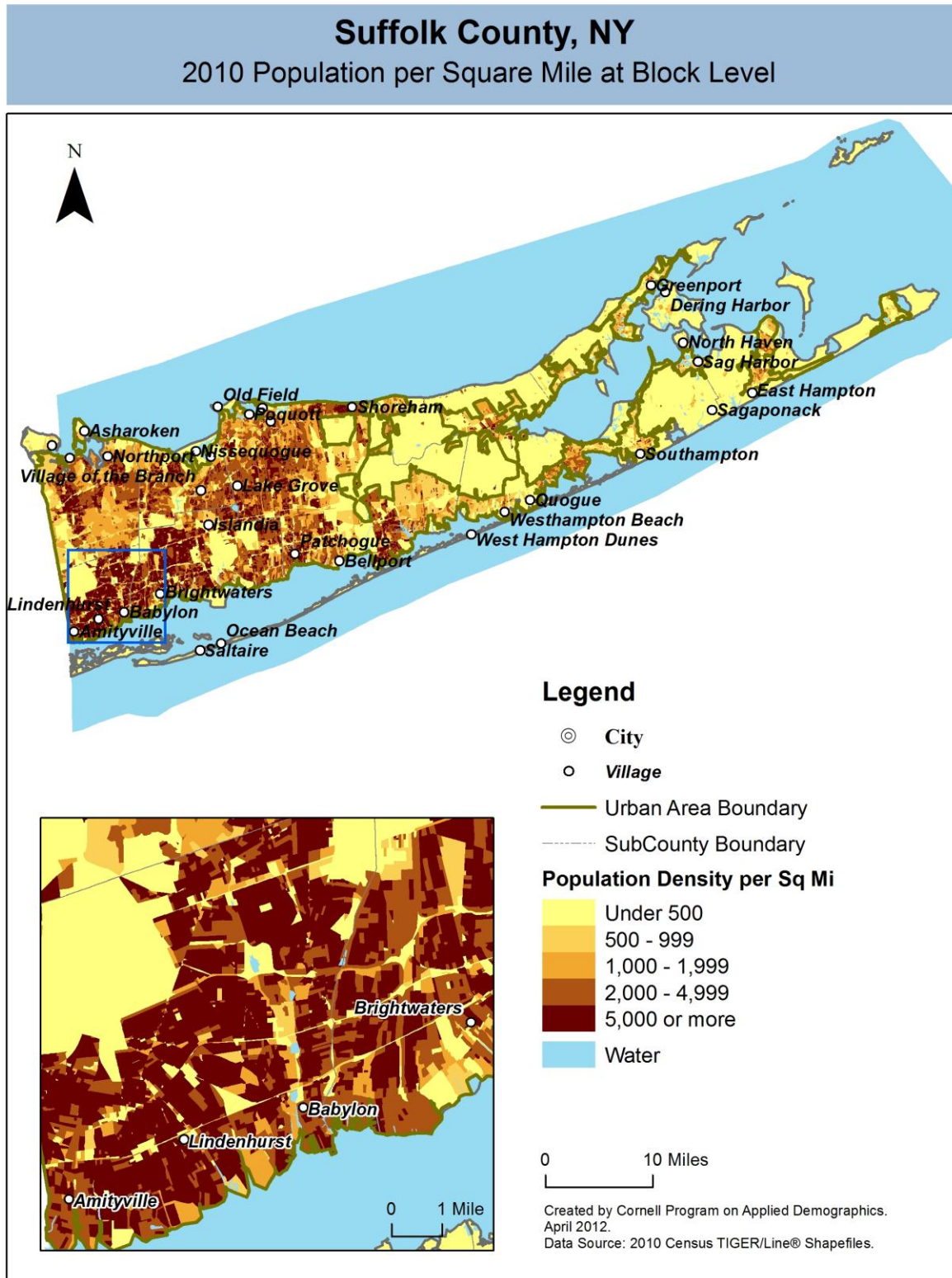
# 1 Reference Maps



**Suffolk County, NY**  
Overlap with School and Political Districts



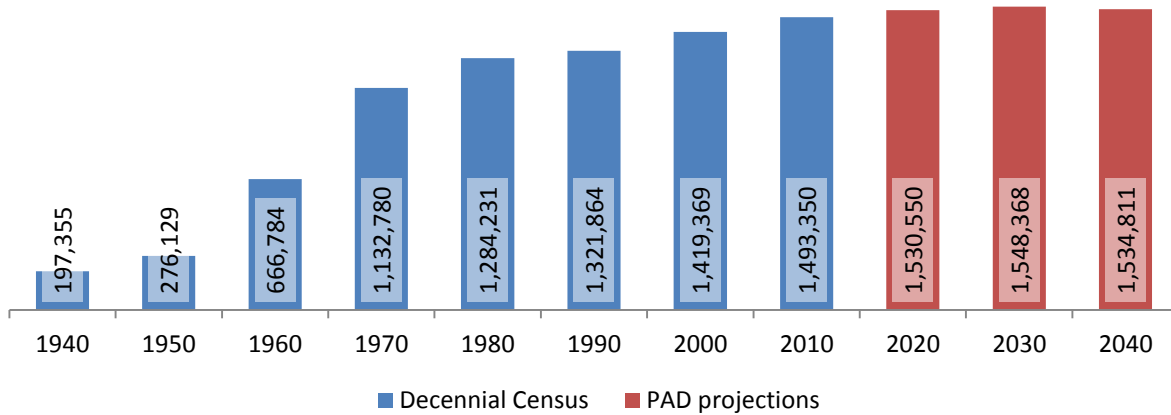
## 2 Population density and Urban Areas Map



### 3 Total Population

#### 3.1 Historic and projected

Total population, Suffolk County, 1940-2040



Source: 1940-2010 Decennial Census and projections by Cornell Program on Applied Demographics

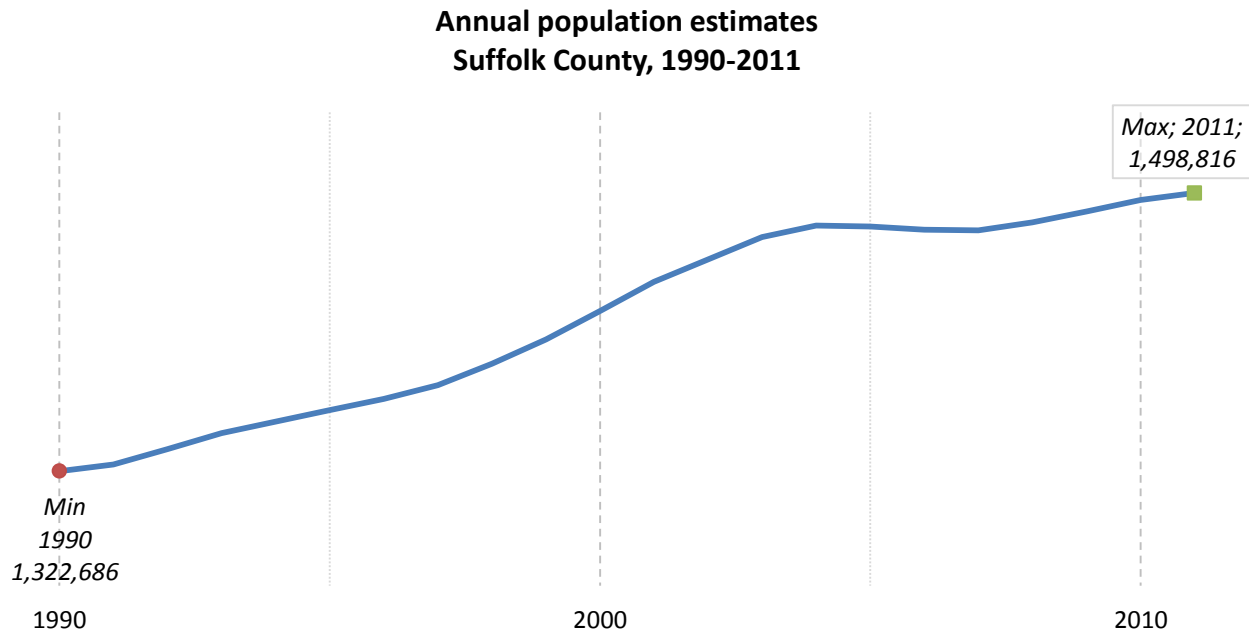
#### 3.2 Change since previous Census

		Total population	Change	
			Number	Percent
Decennial Census	1940	197,355		
	1950	276,129	78,774	39.9%
	1960	666,784	390,655	141.5%
	1970	1,132,780	465,996	69.9%
	1980	1,284,231	151,451	13.4%
	1990	1,321,864	37,633	2.9%
	2000	1,419,369	97,505	7.4%
	2010	1,493,350	73,981	5.2%
PAD projec- tions	2020	1,530,550	37,200	2.5%
	2030	1,548,368	17,818	1.2%
	2040	1,534,811	-13,557	-0.9%

Source: 1940-2010 Decennial Census and projections by Cornell Program on Applied Demographics



### 3.3 Annual population estimates



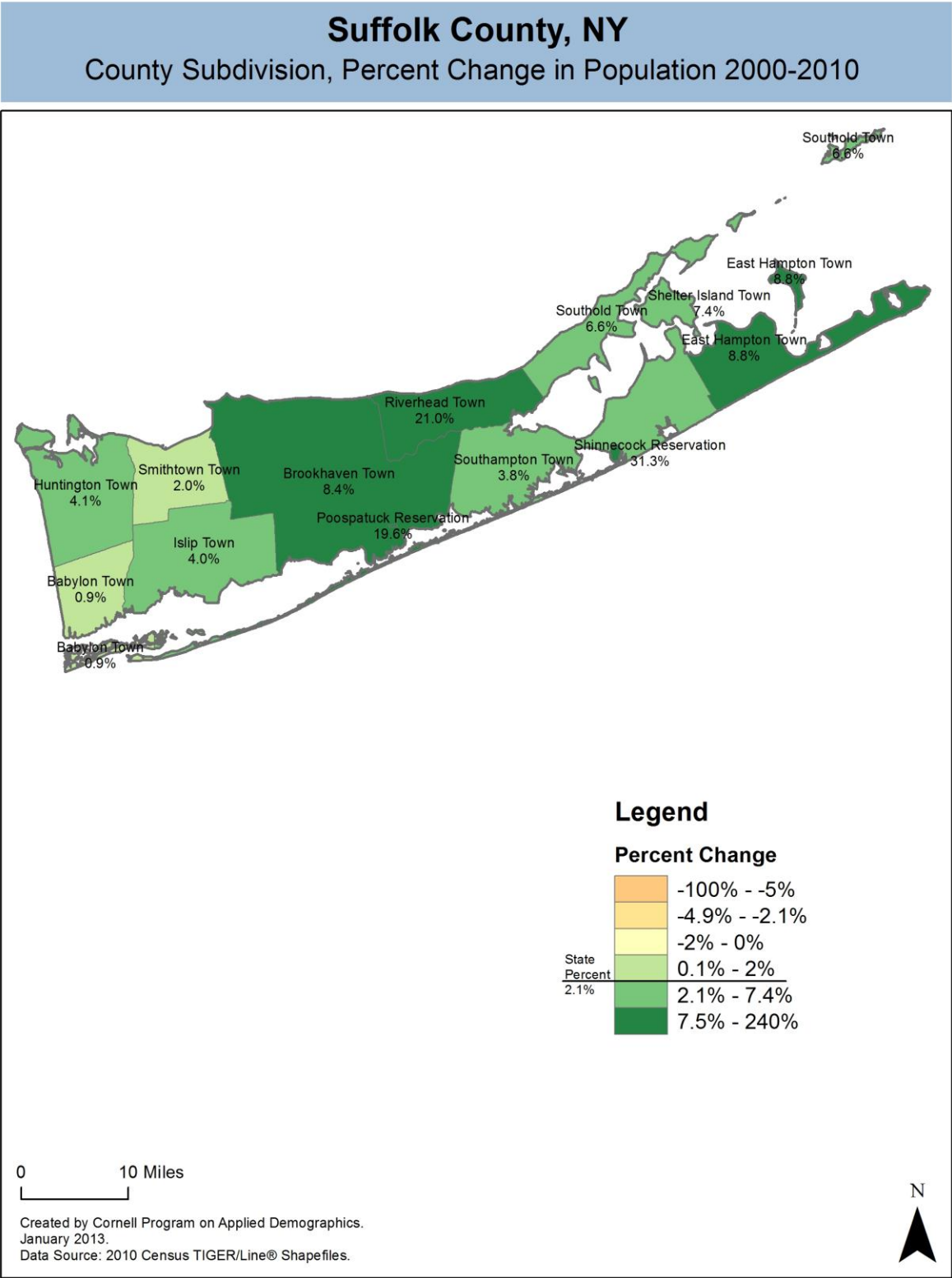
Source: U.S. Census Bureau population estimates (1990-1999 and 2000-2009 intercensal and vintage 2011 postcensal)

### 3.4 Percentage sub county change 2000-2010

	Total Population		Difference	
	2000	2010	Count	%
New York State	18,976,821 *	19,378,102	401,281	2.1%
Suffolk County	1,419,369	1,493,350	73,981	5.2%
<b>Towns</b>				
Babylon	211,792	213,603	1,811	0.9%
Brookhaven	448,248	486,040	37,792	8.4%
East Hampton	19,719	21,457	1,738	8.8%
Huntington	195,289	203,264	7,975	4.1%
Islip	322,782 *	335,543	12,761	4.0%
Riverhead	27,680	33,506	5,826	21.0%
Shelter Island	2,228	2,392	164	7.4%
Smit	115,545 *	117,801	2,256	2.0%
Southampton	54,712	56,790	2,078	3.8%
Southold	20,599	21,968	1,369	6.6%
<b>Reservations</b>				
Poospatuck	271	324	53	19.6%
Shinnecock	504	662	158	31.3%

\* Original counts revised through Count Question Resolution Program (CQR)

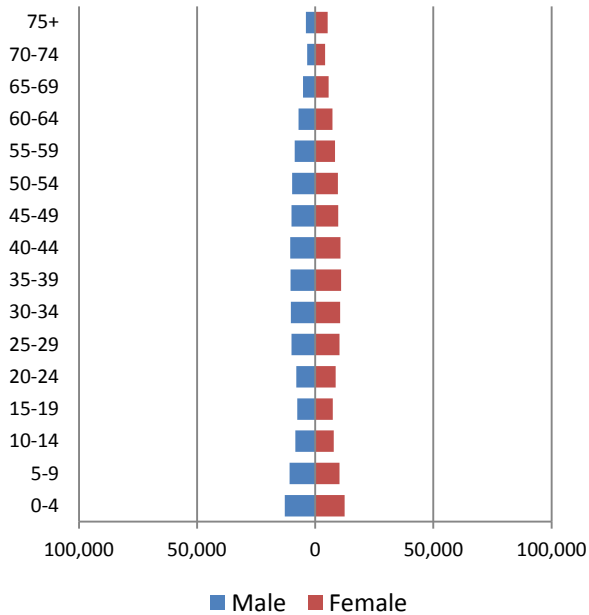
Source: U.S. Census Bureau intercensal population estimates 2000-2010



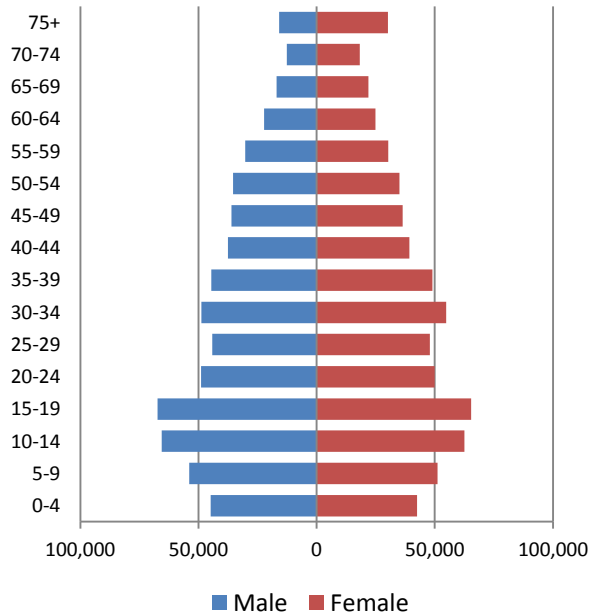
## 4 Population by age

### 4.1 Historic and projected population pyramids

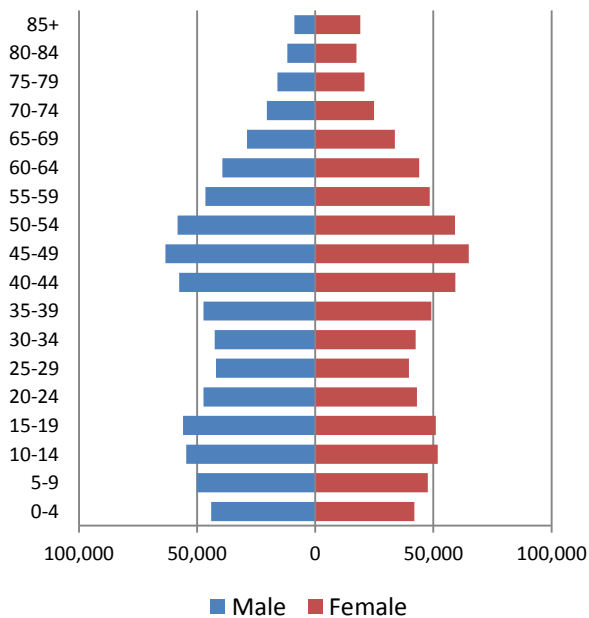
**1950 Population Pyramid, Suffolk County**



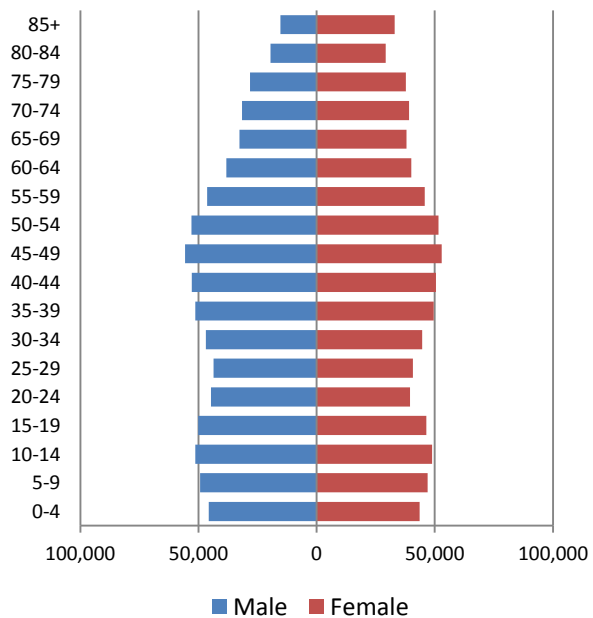
**1980 Population Pyramid, Suffolk County**



**2010 Population Pyramid, Suffolk County**



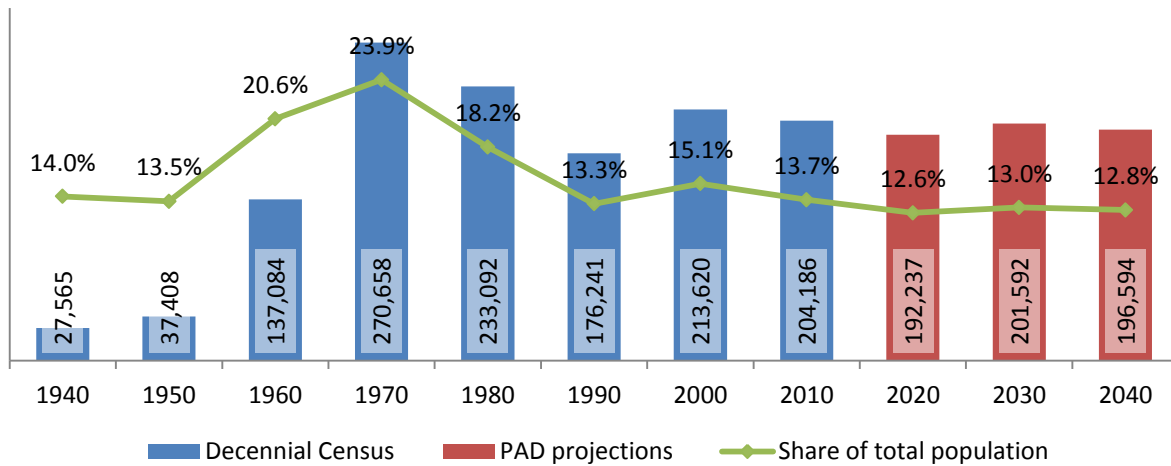
**2040 Population Pyramid, Suffolk County**



Source: 1950, 1980, 2010 Decennial Census and projections by Cornell Program on Applied Demographics

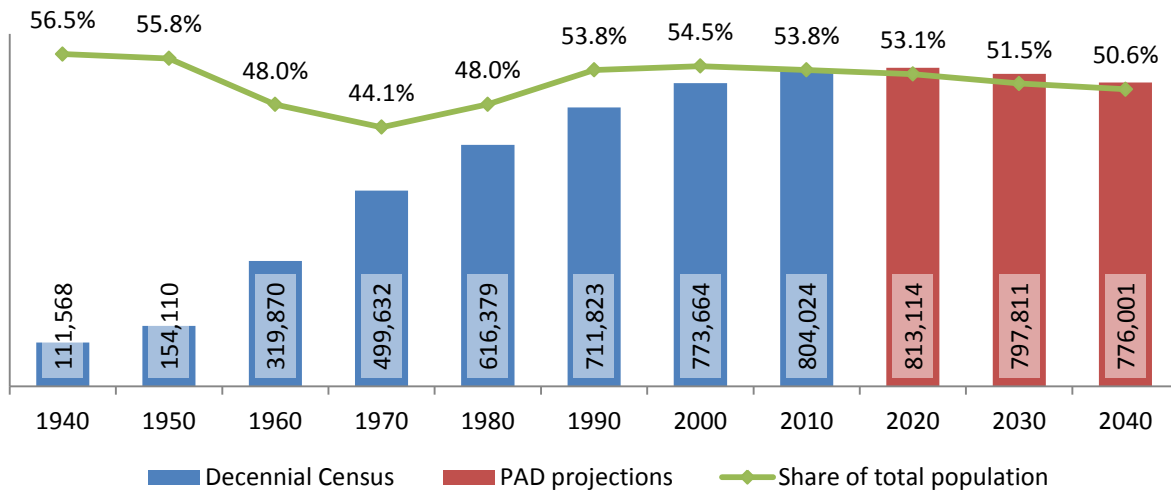
## 4.2 Selected age groups

**Population age 5-14, Suffolk County, 1940-2040**

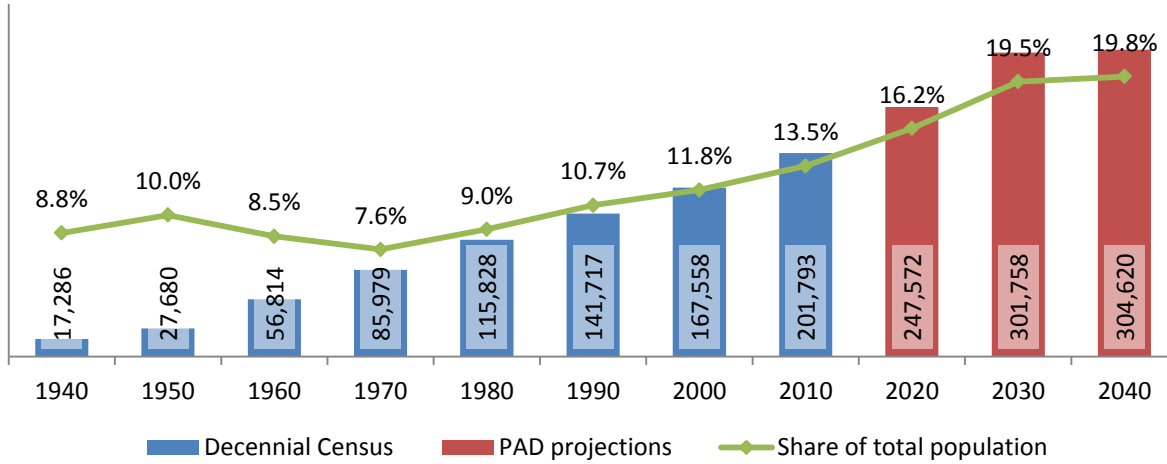


Source: 1940-2010 Decennial Census and projections by Cornell Program on Applied Demographics

**Population age 25-64, Suffolk County, 1940-2040**



Source: 1940-2010 Decennial Census and projections by Cornell Program on Applied Demographics

**Population age 65 and over, Suffolk County, 1940-2040**

Source: 1940-2010 Decennial Census and projections by Cornell Program on Applied Demographics

### 4.3 Median age: comparison between areas

	Median Age
New York State	38.0
Suffolk County	39.8

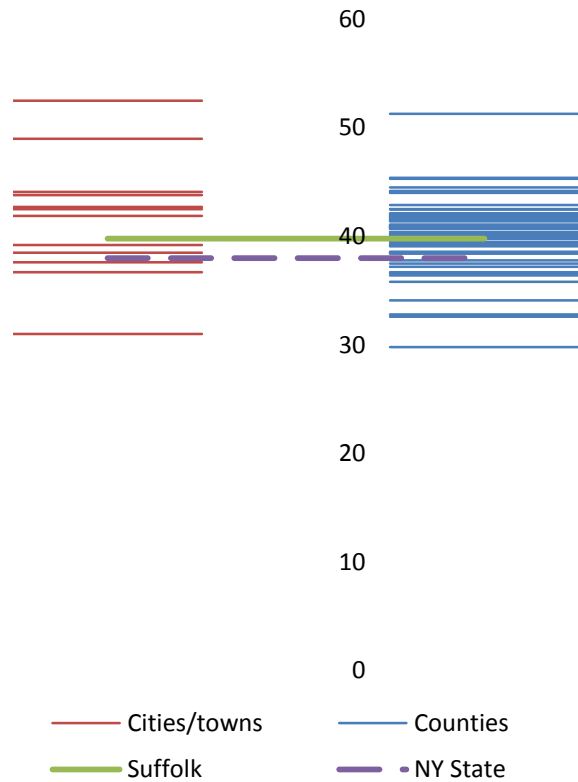
#### Towns

Babylon town	39.2
Brookhaven town	38.5
East Hampton town	43.8
Huntington town	42.5
Islip town	37.6
Riverhead town	44.1
Shelter Island town	52.5
Smithtown town	42.7
Southampton town	41.9
Southold town	49.0

#### Reservations

Poospatuck Reservation	31.0
Shinnecock Reservation	36.7

Median age comparison  
within county (left) and  
between counties (right)



Source: 2010 Decennial Census

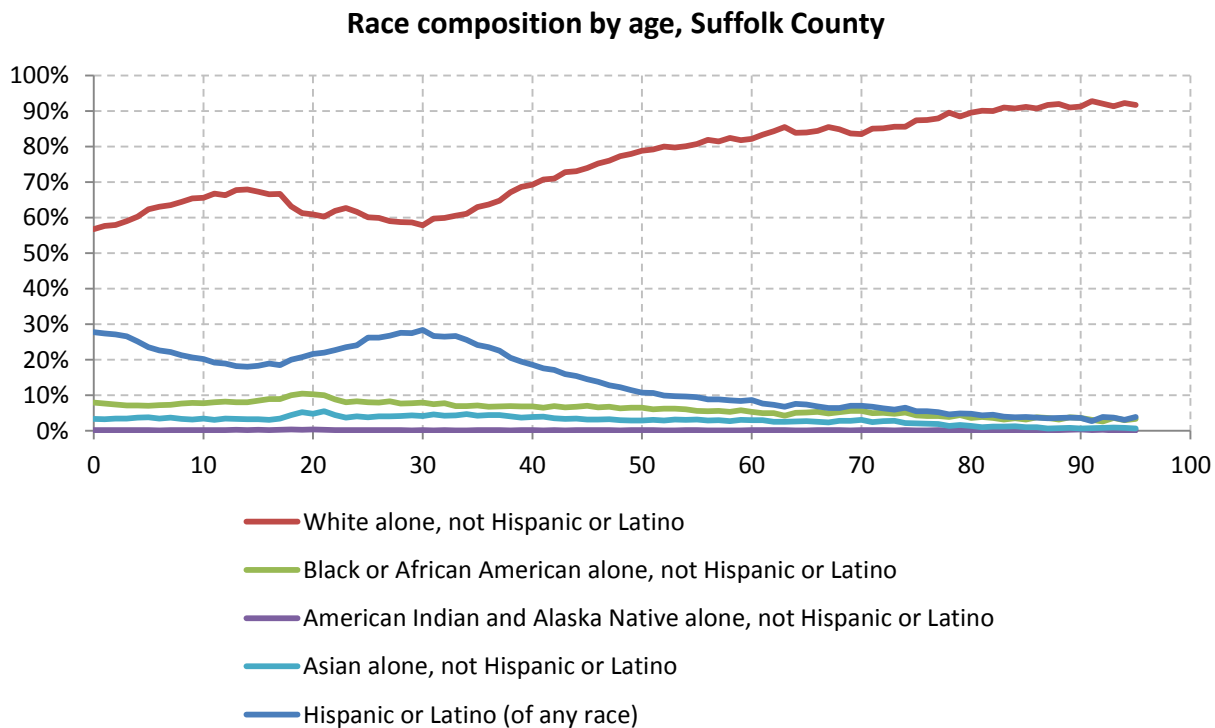
## 5 Race

### 5.1 Total and household population by race

	Total		In households		In Group Quarters
	Count	Percentage	Count	Percentage	Count
<b>Total population</b>	1,493,350	100%	1,463,944	100%	29,406
Not Hispanic or Latino					
One race					
White	1,068,728	71.6%	1,048,929	71.7%	19,799
Black or African American	102,117	6.8%	97,731	6.7%	4,386
American Indian and Alaska Native	2,906	0.2%	2,842	0.2%	64
Asian	50,295	3.4%	48,127	3.3%	2,168
Native Hawaiian and Other Pacific Islander	275	0.0%	257	0.0%	18
Some other race	3,041	0.2%	3,000	0.2%	41
Two or more races	19,749	1.3%	19,434	1.3%	315
Hispanic or Latino (of any race)	246,239	16.5%	243,624	16.6%	2,615

Source: 2010 Decennial Census

### 5.2 Race composition by age



Source: 2010 Decennial Census



## 6 Housing units

### 6.1 Characteristics

	COUNT		PERCENTAGE	
	Estimate	Margin of error	Estimate	Margin of error
<b>HOUSING OCCUPANCY</b>				
<b>Total housing units</b>	567,748	± 614	100.0%	
Occupied housing units	496,677	± 1,992	87.5%	± 0.3
Vacant housing units	71,071	± 1,789	12.5%	± 0.3
<b>YEAR STRUCTURE BUILT</b>				
<b>Total housing units</b>	567,748	± 614	100.0%	
Built 2005 or later	12,258	± 725	2.2%	± 0.1
Built 2000 to 2004	30,510	± 1,153	5.4%	± 0.2
Built 1990 to 1999	47,667	± 1,510	8.4%	± 0.3
Built 1980 to 1989	56,203	± 1,602	9.9%	± 0.3
Built 1970 to 1979	103,351	± 2,098	18.2%	± 0.4
Built 1960 to 1969	118,206	± 1,903	20.8%	± 0.3
Built 1950 to 1959	110,142	± 1,891	19.4%	± 0.3
Built 1940 to 1949	31,654	± 1,085	5.6%	± 0.2
Built 1939 or earlier	57,757	± 1,670	10.2%	± 0.3
<b>HOUSING TENURE</b>				
<b>Occupied housing units</b>	496,677	± 1,992	100.0%	
Owner-occupied	401,345	± 3,095	80.8%	± 0.4
Renter-occupied	95,332	± 2,117	19.2%	± 0.4
<b>HOUSE HEATING FUEL</b>				
<b>Occupied housing units</b>	496,677	± 1,992	100.0%	
Utility gas	169,705	± 2,235	34.2%	± 0.5
Bottled, tank, or LP gas	8,276	± 691	1.7%	± 0.1
Electricity	32,025	± 1,133	6.4%	± 0.2
Fuel oil, kerosene, etc.	281,693	± 2,755	56.7%	± 0.5
Coal or coke	454	± 171	0.1%	± 0.1
Wood	2,853	± 334	0.6%	± 0.1
Solar energy	82	± 44	0.0%	± 0.1
Other fuel	988	± 180	0.2%	± 0.1
No fuel used	601	± 151	0.1%	± 0.1
<b>VALUE</b>				
<b>Owner-occupied units</b>	401,345	± 3,095	100.0%	
Less than \$50,000	5,158	± 448	1.3%	± 0.1
\$50,000 to \$99,999	4,649	± 430	1.2%	± 0.1
\$100,000 to \$149,999	5,649	± 525	1.4%	± 0.1
\$150,000 to \$199,999	9,814	± 667	2.4%	± 0.2
\$200,000 to \$299,999	50,614	± 1,497	12.6%	± 0.3
\$300,000 to \$499,999	205,185	± 2,584	51.1%	± 0.5
\$500,000 to \$999,999	102,099	± 1,749	25.4%	± 0.4
\$1,000,000 or more	18,177	± 775	4.5%	± 0.2
Median (dollars)	411,000	± 1,766		

Source: 2007-2011 American Community Survey

## 6.2 Historical data on number of housing units and occupancy status

Year	Number of Housing Units	Change since previous Census	Occupied	Occupancy rate	Vacant
1970	334,378		295,587	88.4%	38,791
1980	431,722	29.1%	385,719	89.3%	46,003
1990	481,317	11.5%	424,719	88.2%	56,598
2000	522,323	8.5%	469,299	89.8%	53,024
2010	569,985	9.1%	499,922	87.7%	70,063

*Source: 1970-2010 Decennial Census*

## 7 Education

### 7.1 Enrollment by level of school

	Estimate	Margin of error
<b>Total enrolled in school</b>	395,376	± 2,503
Nursery school, preschool	25,034	± 912
Kindergarten	18,382	± 1,021
Elementary: grade 1 to grade 4	77,439	± 1,448
Elementary: grade 5 to grade 8	85,933	± 1,580
High school: grade 9 to grade 12	92,036	± 1,298
College, undergraduate	76,216	± 1,762
Graduate, professional school	20,336	± 1,196

Source: 2007-2011 American Community Survey

### 7.2 Enrollment by age

	Estimate	Margin of error
3 and 4 years	59.3%	± 2.0
5 to 9 years	96.6%	± 0.4
10 to 14 years	98.3%	± 0.3
15 to 17 years	96.9%	± 0.4
18 and 19 years	79.5%	± 1.5
20 to 24 years	47.4%	± 1.4
25 to 34 years	10.7%	± 0.6
35 years and over	2.1%	± 0.1

Source: 2007-2011 American Community Survey

### 7.3 Percentage age 18-24 enrolled in college

	Estimate	Margin of error
Population 18 to 24 years	127,527	± 117
Enrolled in college or graduate school	48.9%	± 1.0
Males 18 to 24 years	66,957	± 96
Enrolled in college or graduate school	45.5%	± 1.3
Females 18 to 24 years	60,570	± 55
Enrolled in college or graduate school	52.7%	± 1.6

Source: 2007-2011 American Community Survey

## 7.4 Educational attainment

	COUNT		PERCENTAGE	
	Estimate	Margin of error	Estimate	Margin of error
<b>Population 25 years and over</b>	999,776	± 116	100%	
<b>EDUCATIONAL ATTAINMENT</b>				
Less than 9th grade	45,466	± 1,657	4.5%	± 0.2
9th to 12th grade, no diploma	59,863	± 1,565	6.0%	± 0.2
High school graduate (includes equivalency)	302,697	± 3,783	30.3%	± 0.4
Some college, no degree	179,200	± 2,954	17.9%	± 0.3
Associate's degree	88,972	± 2,023	8.9%	± 0.2
Bachelor's degree	180,177	± 2,396	18.0%	± 0.2
Graduate or professional degree	143,401	± 2,800	14.3%	± 0.3
Percent high school graduate or higher			89.5%	± 0.2
Percent bachelor's degree or higher			32.4%	± 0.4

Source: 2007-2011 American Community Survey

## 8 Language spoken at home

	COUNT		PERCENTAGE		SPEAK ENGLISH LESS THAN "VERY WELL"	
	Estimate	Margin of error	Estimate	Margin of error	Estimate	Margin of error
<b>Population 5 years and over</b>	1,400,148	± *****	100%			
<b>LANGUAGE SPOKEN AT HOME</b>						
English only	1,119,388	± 3,872	79.9%	± 0.3		
Language other than English	280,760	± 3,873	20.1%	± 0.3	127,738	± 3,227
Spanish	166,141	± 2,770	11.9%	± 0.2	87,029	± 2,621
Other Indo-European languages	82,576	± 2,608	5.9%	± 0.2	27,093	± 1,430
Asian and Pacific Islander languages	26,500	± 1,440	1.9%	± 0.1	12,220	± 1,032
Other languages	5,543	± 853	0.4%	± 0.1	1,396	± 393

Source: 2007-2011 American Community Survey

## 9 Labor Force Characteristics

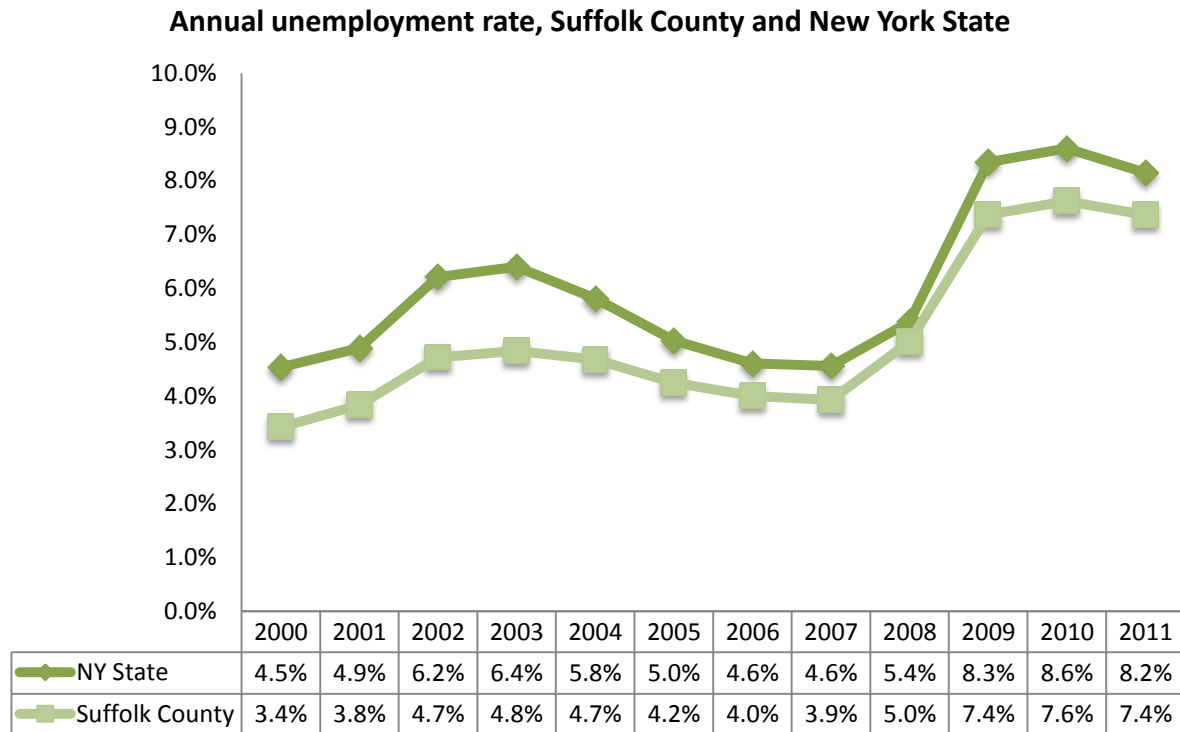
### 9.1 Labor force, employment and unemployment

	TOTAL		IN LABOR FORCE		EMPLOYED		UNEMPLOYMENT RATE	
	Estimate	Margin of error	Estimate	Margin of error	Estimate	Margin of error	Estimate	Margin of error
<b>Population 16 years and over</b>	1,172,633	± 741	66.5%	± 0.4	62.1%	± 0.3	6.4%	± 0.2
<b>AGE</b>								
16 to 19 years	84,678	± 783	39.0%	± 1.3	31.7%	± 1.2	18.7%	± 1.3
20 to 24 years	88,179	± 244	74.0%	± 1.4	64.7%	± 1.3	12.2%	± 1.0
25 to 44 years	386,069	± 117	83.9%	± 0.5	78.9%	± 0.5	5.8%	± 0.3
45 to 54 years	240,691	± *****	84.2%	± 0.5	80.2%	± 0.5	4.7%	± 0.4
55 to 64 years	174,972	± *****	67.7%	± 0.8	64.7%	± 0.8	4.4%	± 0.4
65 to 74 years	105,196	± 61	28.3%	± 0.9	26.5%	± 0.9	6.1%	± 0.8
75 years and over	92,848	± 61	6.9%	± 0.4	6.4%	± 0.4	7.6%	± 1.8
<b>RACE AND HISPANIC OR LATINO ORIGIN</b>								
One race	1,158,322	± 1,362	66.5%	± 0.4	62.2%	± 0.3	6.4%	± 0.2
White	980,695	± 2,976	66.3%	± 0.4	62.2%	± 0.3	6.1%	± 0.3
Black or African American	82,563	± 1,041	65.7%	± 1.1	59.3%	± 1.1	9.8%	± 0.9
American Indian and Alaska Native	2,711	± 493	65.0%	± 6.8	55.5%	± 7.1	13.6%	± 4.8
Asian	39,986	± 557	63.8%	± 1.8	60.0%	± 1.7	5.7%	± 1.0
Pacific Islander	76	± 74	100.0%	± 33.2	73.7%	± 26.6	26.3%	± 26.6
Some other race	52,291	± 3,059	73.4%	± 1.9	68.4%	± 1.9	6.7%	± 1.1
Two or more races	14,311	± 1,153	65.1%	± 2.6	58.4%	± 2.7	10.0%	± 2.4
Hispanic or Latino origin (of any race)	170,634	± 342	73.1%	± 0.9	67.1%	± 0.9	8.1%	± 0.8
White alone, not Hispanic or Latino	871,143	± 618	65.4%	± 0.4	61.6%	± 0.3	5.7%	± 0.2
<b>SEX</b>								
<b>Population 20 to 64 years</b>	889,911	± 234	79.8%	± 0.4	75.0%	± 0.3	5.9%	± 0.2
Male	441,572	± 218	85.9%	± 0.4	80.5%	± 0.4	6.1%	± 0.3
Female	448,339	± 56	73.9%	± 0.5	69.7%	± 0.5	5.6%	± 0.3
With own children under 6 years	72,923	± 1,926	66.0%	± 1.4	61.1%	± 1.4	7.2%	± 1.0
<b>EDUCATIONAL ATTAINMENT</b>								
<b>Population 25 to 64 years</b>	801,732	± 117	80.5%	± 0.4	76.2%	± 0.4	5.2%	± 0.2
Less than high school graduate	70,364	± 1,713	67.3%	± 1.5	60.8%	± 1.7	9.7%	± 1.1
High school graduate (includes equivalency)	223,509	± 3,285	76.4%	± 0.8	71.5%	± 0.8	6.3%	± 0.5
Some college or associate's degree	229,773	± 3,161	81.8%	± 0.6	77.2%	± 0.6	5.5%	± 0.4
Bachelor's degree or higher	278,086	± 3,575	86.0%	± 0.4	83.0%	± 0.4	3.4%	± 0.2

Table formula: **LABOR FORCE** = # EMPLOYED + # UNEMPLOYED  
**% IN LABOR FORCE** = LABOR FORCE / TOTAL \* 100%  
**% EMPLOYED** = # EMPLOYED / TOTAL \* 100%  
**UNEMPLOYMENT RATE** = # UNEMPLOYED / LABOR FORCE \* 100%

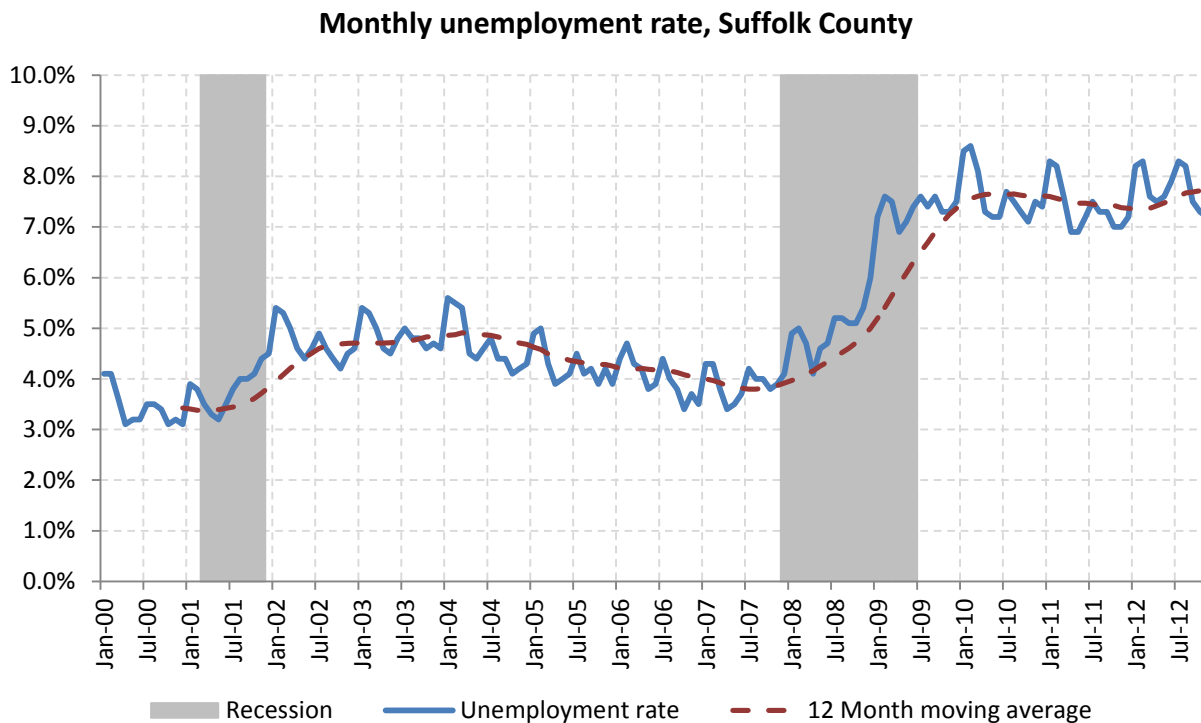
Source: 2007-2011 American Community Survey

## 9.2 Annual unemployment rate



Source: Bureau Labor Statistics (BLS)

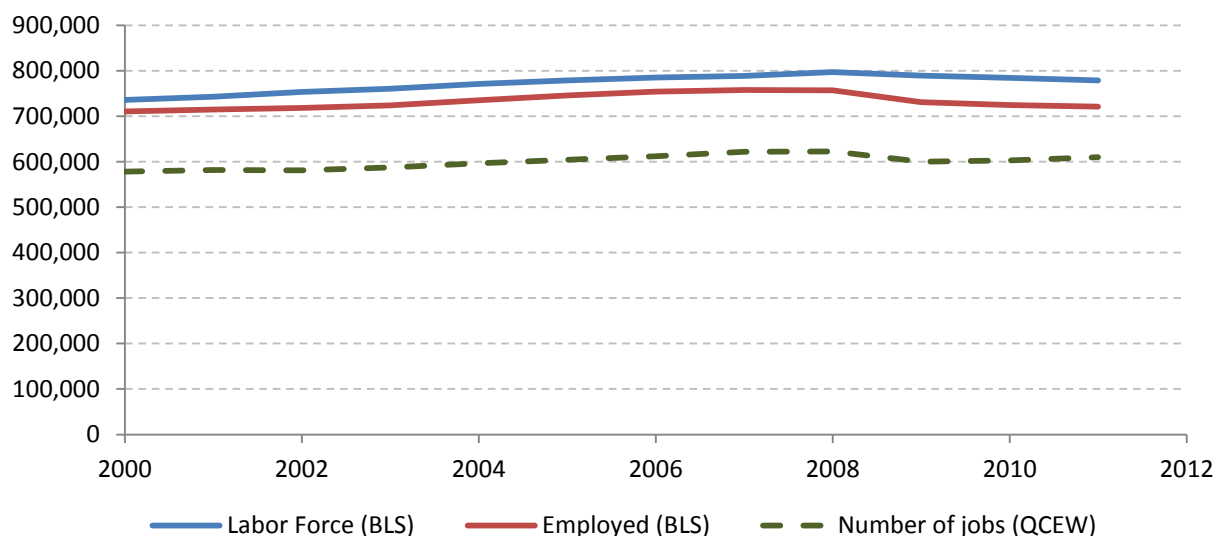
## 9.3 Monthly unemployment rate



Source: Bureau Labor Statistics (BLS)

## 9.4 Employment and number of jobs

**Labor force, number of employed workers and number of jobs  
Suffolk County**



Source: Bureau Labor Statistics (BLS) and NY Department of Labor - Quarterly Census of Employment and Wages (QCEW) – annual averages

## 9.5 Class of worker

		Median earnings (\$)					
		Total	%Male	%Female	Total	Male	Female
Civilian employed population 16 years and over	Estimate	728,496	53.1%	46.9%	43,474	54,246	34,873
	Margin of error	± 3,755	± 0.2	± 0.2	± 471	± 533	± 448
Private for-profit wage and salary workers:	Estimate	505,942	56.1%	43.9%	40,714	51,628	31,177
	Margin of error	± 4,061	± 0.3	± 0.3	± 353	± 515	± 371
Employee of private company workers	Estimate	465,116	54.3%	45.7%	39,505	50,242	30,966
	Margin of error	± 3,900	± 0.3	± 0.3	± 520	± 578	± 389
Self-employed in own incorporated business workers	Estimate	40,826	76.9%	23.1%	62,065	66,983	39,016
	Margin of error	± 1,561	± 1.4	± 1.4	± 2,273	± 2,852	± 3,699
Private not-for-profit wage and salary workers	Estimate	50,156	32.5%	67.5%	41,419	51,238	38,993
	Margin of error	± 1,649	± 1.4	± 1.4	± 884	± 2,830	± 1,488
Local government workers	Estimate	78,954	46.1%	53.9%	61,957	75,626	50,322
	Margin of error	± 2,282	± 1.1	± 1.1	± 1,196	± 1,982	± 1,467
State government workers	Estimate	38,034	43.5%	56.5%	62,084	71,840	53,713
	Margin of error	± 1,396	± 1.8	± 1.8	± 1,806	± 2,294	± 2,062
Federal government workers	Estimate	17,809	57.8%	42.2%	57,233	61,062	53,884
	Margin of error	± 1,018	± 2.1	± 2.1	± 1,235	± 2,309	± 1,189
Self-employed in own not incorporated business workers and unpaid family workers	Estimate	37,601	61.1%	38.9%	30,733	40,003	20,209
	Margin of error	± 1,445	± 1.6	± 1.6	± 808	± 2,645	± 1,470

Source: 2007-2011 American Community Survey

## 9.6 Jobs by industry sector

	Suffolk County			NY state
	2011	Change since 2006	% of total	% of total
<b>All NAICS Sectors</b>	612,083	0.1%	100.0%	100.0%
Agriculture, Forestry, Fishing and Hunting	2,160	-2.7%	0.4%	0.3%
Mining, Quarrying, and Oil and Gas Extraction	192	4.3%	0.0%	0.1%
Utilities	1,951	-11.0%	0.3%	0.5%
Construction	33,668	-11.0%	5.5%	3.5%
Manufacturing	54,828	-10.4%	9.0%	5.5%
Wholesale Trade	38,240	-7.5%	6.2%	4.0%
Retail Trade	80,847	5.4%	13.2%	10.5%
Transportation and Warehousing	17,622	0.3%	2.9%	3.4%
Information	14,155	-24.3%	2.3%	3.3%
Finance and Insurance	21,778	-6.3%	3.6%	6.0%
Real Estate and Rental and Leasing	6,929	-8.7%	1.1%	2.3%
Professional, Scientific, and Technical Services	42,156	15.2%	6.9%	6.9%
Management of Companies and Enterprises	8,570	-24.6%	1.4%	1.6%
Administrative and Support and Waste Management and Remediation Services	36,681	-4.0%	6.0%	5.2%
Educational Services	69,985	1.0%	11.4%	10.8%
Health Care and Social Assistance	83,403	10.7%	13.6%	17.0%
Arts, Entertainment, and Recreation	10,602	-0.4%	1.7%	1.9%
Accommodation and Food Services	42,194	15.2%	6.9%	7.3%
Other Services (except Public Administration)	22,401	3.3%	3.7%	3.9%
Public Administration	23,723	2.1%	3.9%	5.8%

Source: U.S. Census Bureau - Public Use Quarterly Workforce Indicators (QWI) – annual averages

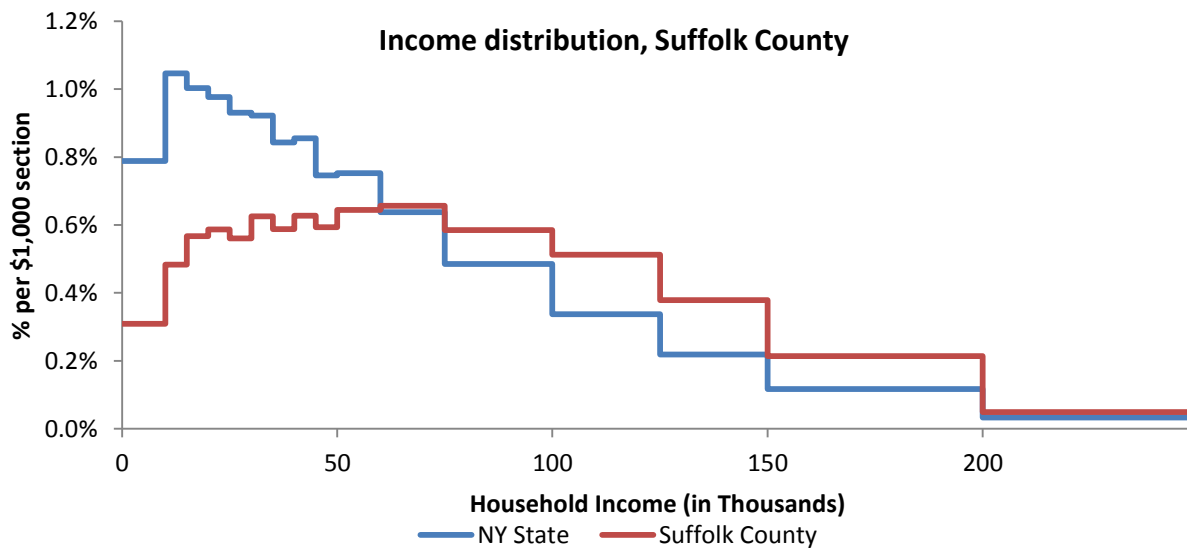


## 10 Household Income

### 10.1 Distribution

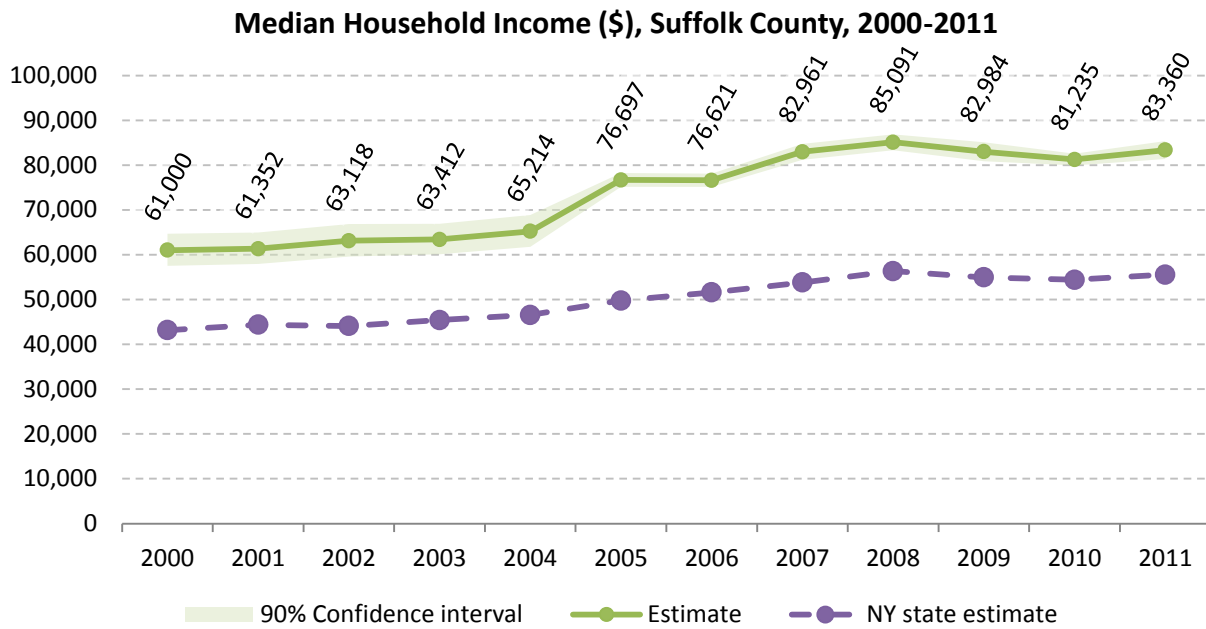
	Estimate	Margin of error	Interval width (in \$1,000)	Est. per \$1,000 section
<b>Total:</b>	496,677	± 1,992		
Less than \$10,000	15,335	± 930	10	1,533.5
\$10,000 to \$14,999	11,991	± 770	5	2,398.2
\$15,000 to \$19,999	14,089	± 748	5	2,817.8
\$20,000 to \$24,999	14,573	± 705	5	2,914.6
\$25,000 to \$29,999	13,908	± 729	5	2,781.6
\$30,000 to \$34,999	15,543	± 864	5	3,108.6
\$35,000 to \$39,999	14,600	± 943	5	2,920.0
\$40,000 to \$44,999	15,579	± 919	5	3,115.8
\$45,000 to \$49,999	14,743	± 761	5	2,948.6
\$50,000 to \$59,999	32,010	± 1,201	10	3,201.0
\$60,000 to \$74,999	48,890	± 1,611	15	3,259.3
\$75,000 to \$99,999	72,633	± 1,813	25	2,905.3
\$100,000 to \$124,999	63,615	± 1,700	25	2,544.6
\$125,000 to \$149,999	47,017	± 1,555	25	1,880.7
\$150,000 to \$199,999	53,242	± 1,541	50	1,064.8
\$200,000 or more	48,909	± 1,311	-	-

Source: 2007-2011 American Community Survey



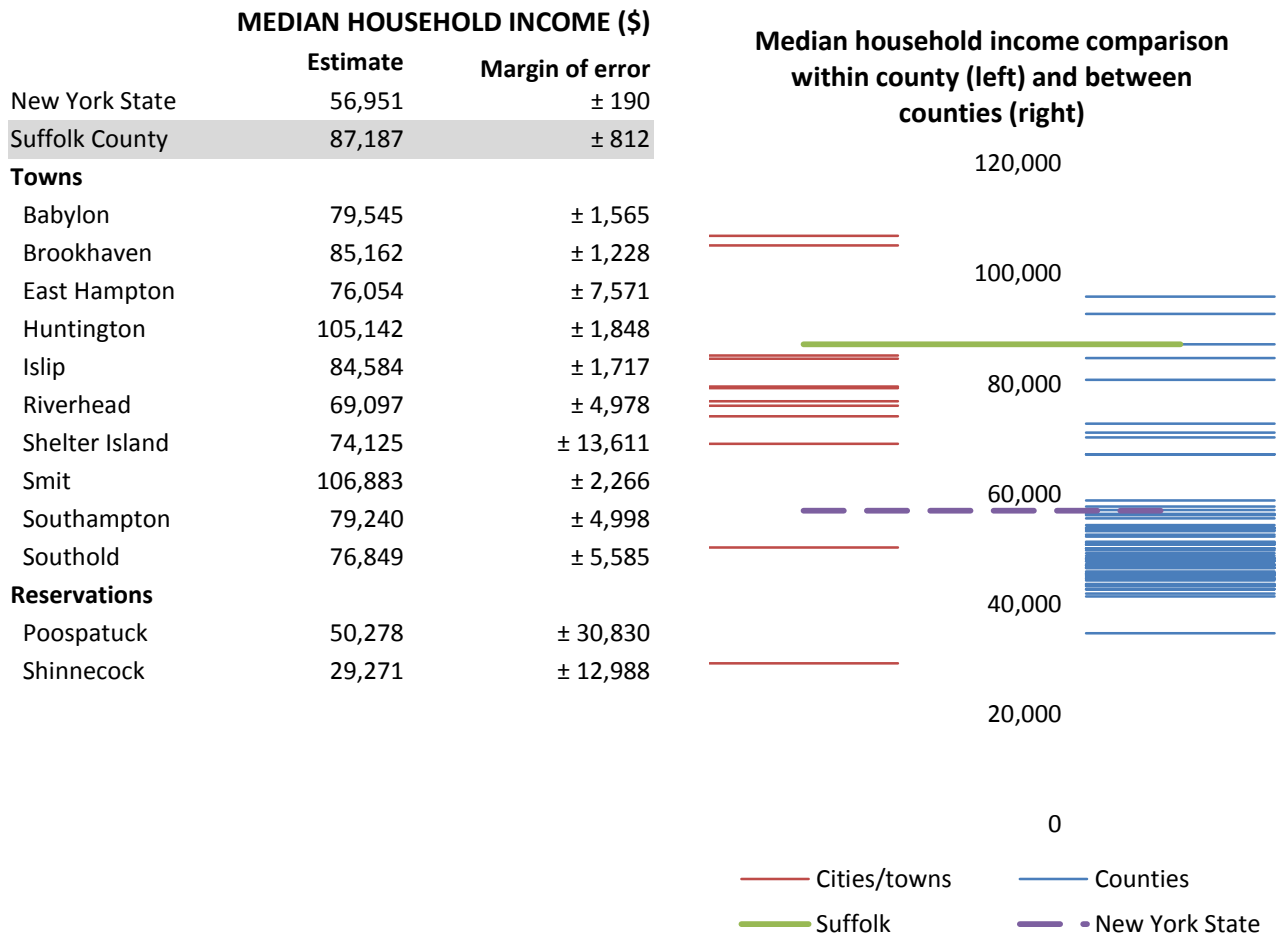
Source: 2007-2011 American Community Survey

## 10.2 Median household income: Trends over time



Source: Small Area Income and Poverty Estimates (SAIPE)

### 10.3 Median household income: Comparison between areas



Source: 2007-2011 American Community Survey

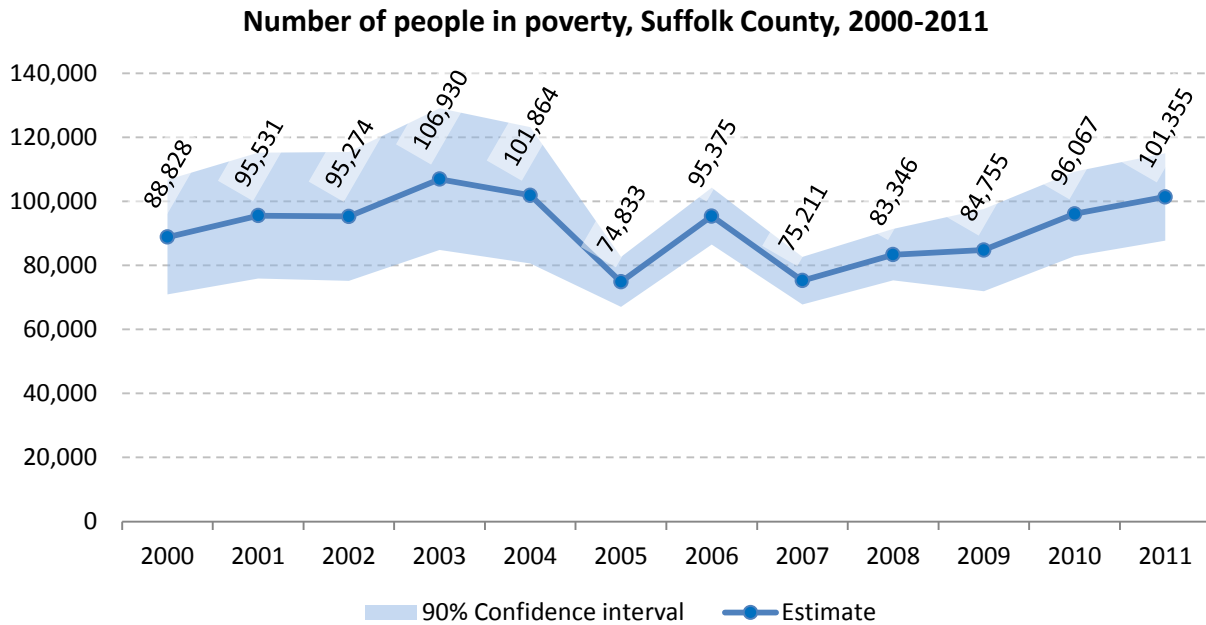
## 11 Poverty

### 11.1 Poverty characteristics

	TOTAL		BELOW POVERTY LEVEL		PERCENT BELOW POVERTY LEVEL	
	Estimate	Margin of error	Estimate	Margin of error	Estimate	Margin of error
<b>Population for whom poverty status is determined</b>	1,461,627	± 1,684	83,759	± 3,822	5.7%	± 0.3
<b>AGE</b>						
Under 18 years	355,303	± 657	23,768	± 1,844	6.7%	± 0.5
Related children under 18 years	353,860	± 803	22,687	± 1,833	6.4%	± 0.5
18 to 64 years	915,845	± 1,230	49,481	± 2,430	5.4%	± 0.3
65 years and over	190,479	± 640	10,510	± 640	5.5%	± 0.3
<b>SEX</b>						
Male	718,782	± 1,070	36,072	± 2,210	5.0%	± 0.3
Female	742,845	± 944	47,687	± 2,127	6.4%	± 0.3
<b>RACE AND HISPANIC OR LATINO ORIGIN</b>						
One race	1,437,164	± 2,274	81,905	± 3,783	5.7%	± 0.3
White	1,210,528	± 4,214	56,699	± 3,252	4.7%	± 0.3
Black or African American	106,426	± 1,636	12,203	± 1,289	11.5%	± 1.2
American Indian and Alaska Native	3,594	± 756	478	± 223	13.3%	± 5.8
Asian	47,236	± 873	3,445	± 804	7.3%	± 1.7
Hispanic or Latino origin (of any race)	233,377	± 484	24,543	± 2,287	10.5%	± 1.0
White alone, not Hispanic or Latino	1,060,267	± 1,290	42,700	± 2,294	4.0%	± 0.2
<b>EDUCATIONAL ATTAINMENT</b>						
<b>Population 25 years and over</b>	988,550	± 1,080	51,202	± 2,249	5.2%	± 0.2
Less than high school graduate	101,880	± 2,057	14,849	± 1,197	14.6%	± 1.2
High school graduate (includes equivalency)	297,718	± 3,834	19,628	± 1,186	6.6%	± 0.4
Some college, associate's degree	266,730	± 3,372	9,982	± 610	3.7%	± 0.2
Bachelor's degree or higher	322,222	± 3,787	6,743	± 683	2.1%	± 0.2
<b>EMPLOYMENT STATUS</b>						
<b>Civilian labor force 16 years and over</b>	775,117	± 4,117	22,440	± 1,523	2.9%	± 0.2
Employed	725,672	± 3,724	16,773	± 1,342	2.3%	± 0.2
Male	385,176	± 2,123	8,231	± 909	2.1%	± 0.2
Female	340,496	± 2,568	8,542	± 737	2.5%	± 0.2
Unemployed	49,445	± 1,888	5,667	± 649	11.5%	± 1.3
Male	27,293	± 1,327	2,764	± 447	10.1%	± 1.6
Female	22,152	± 1,019	2,903	± 401	13.1%	± 1.8
<b>WORK EXPERIENCE IN THE PAST 12 MONTHS</b>						
<b>Population 16 years and over</b>	1,151,171	± 1,426	63,023	± 2,590	5.5%	± 0.2
Worked full-time, year-round	507,490	± 3,405	4,893	± 629	1.0%	± 0.1
Worked part-time or part-year	287,622	± 3,195	16,740	± 1,206	5.8%	± 0.4
Did not work	356,059	± 3,748	41,390	± 1,916	11.6%	± 0.5

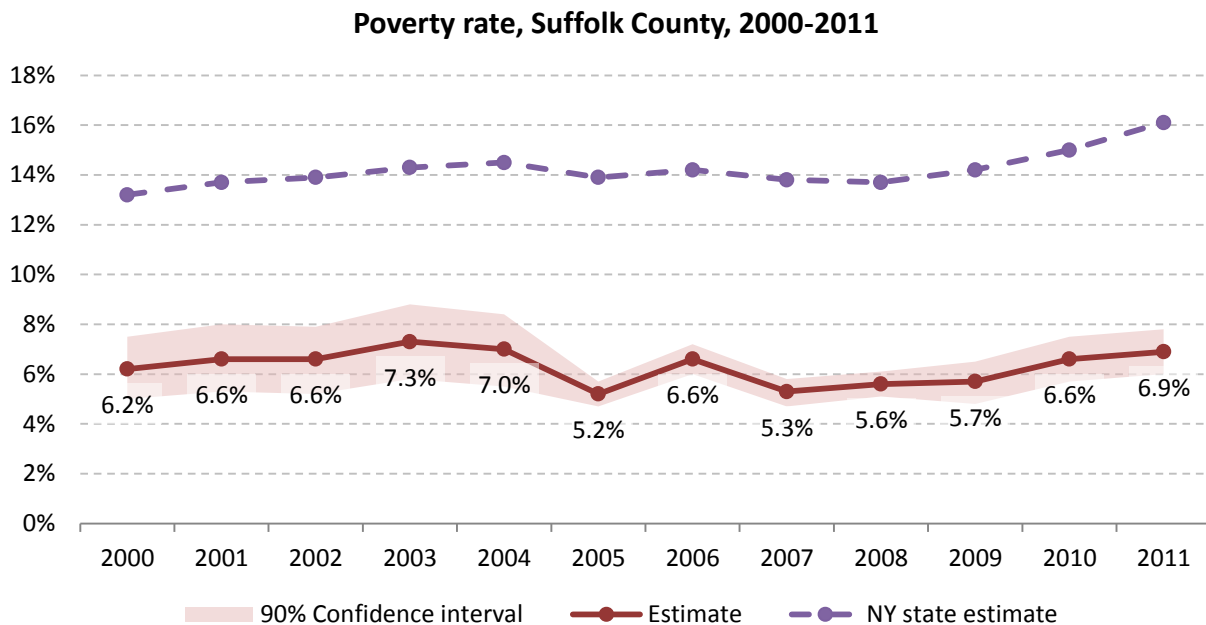
Source: 2007-2011 American Community Survey

## 11.2 Poverty: Trends over time: Count



Source: Small Area Income and Poverty Estimates (SAIPE)

## 11.3 Poverty: Trends over time: Rate



Source: Small Area Income and Poverty Estimates (SAIPE)

## 11.4 Poverty rate: comparison between areas

	Poverty Rate - All people	
	Estimate	Margin of error
New York State	14.5%	± 0.1
Suffolk County	5.7%	± 0.3

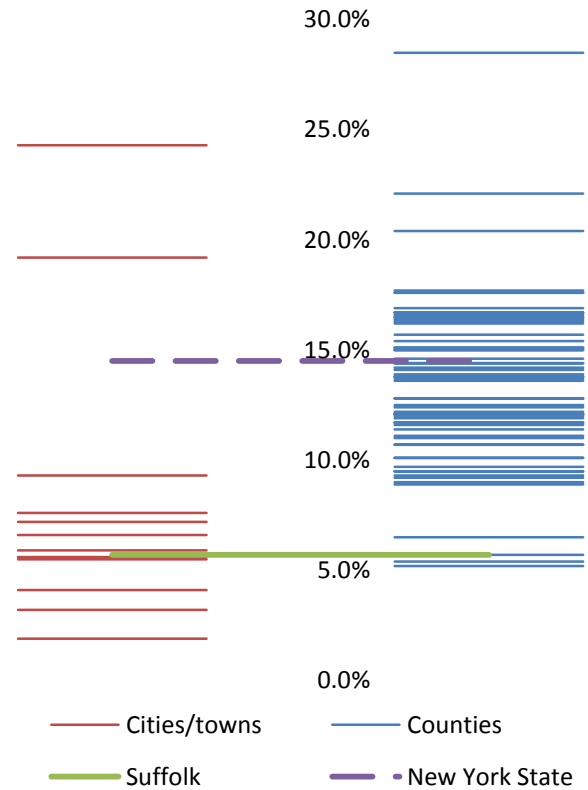
### Towns

Babylon	5.9%	± 0.6
Brookhaven	6.6%	± 0.5
East Hampton	7.6%	± 3.3
Huntington	4.1%	± 0.5
Islip	5.6%	± 0.5
Riverhead	9.3%	± 2.1
Shelter Island	1.9%	± 2.2
Smit	3.2%	± 0.7
Southampton	7.2%	± 1.7
Southold	5.5%	± 1.7

### Reservations

Poospatuck	19.2%	± 15.8
Shinnecock	24.3%	± 15.2

Poverty rate comparison  
within county (left) and  
between counties (right)

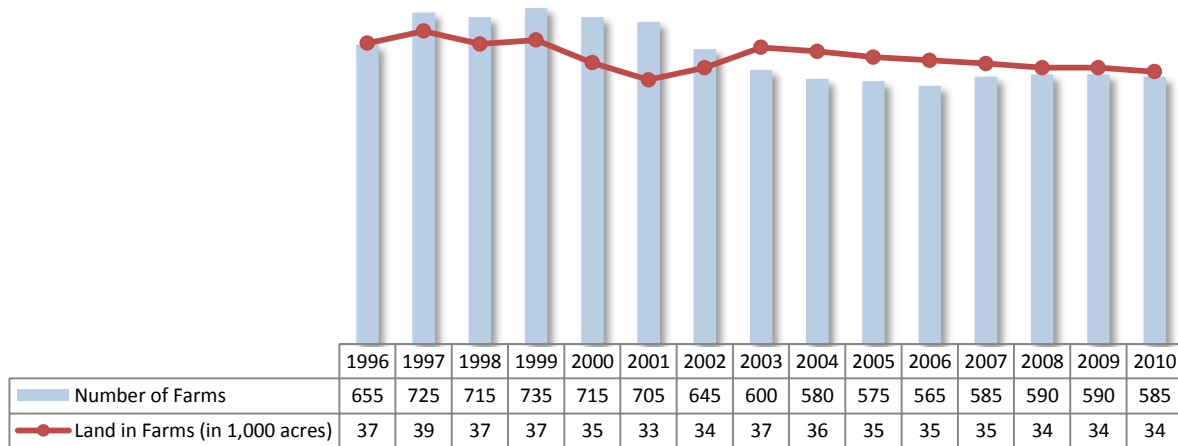


Source: 2007-2011 American Community Survey

## 12 Agriculture

### 12.1 Number of farms and land in farms

Suffolk County, 1996-2010



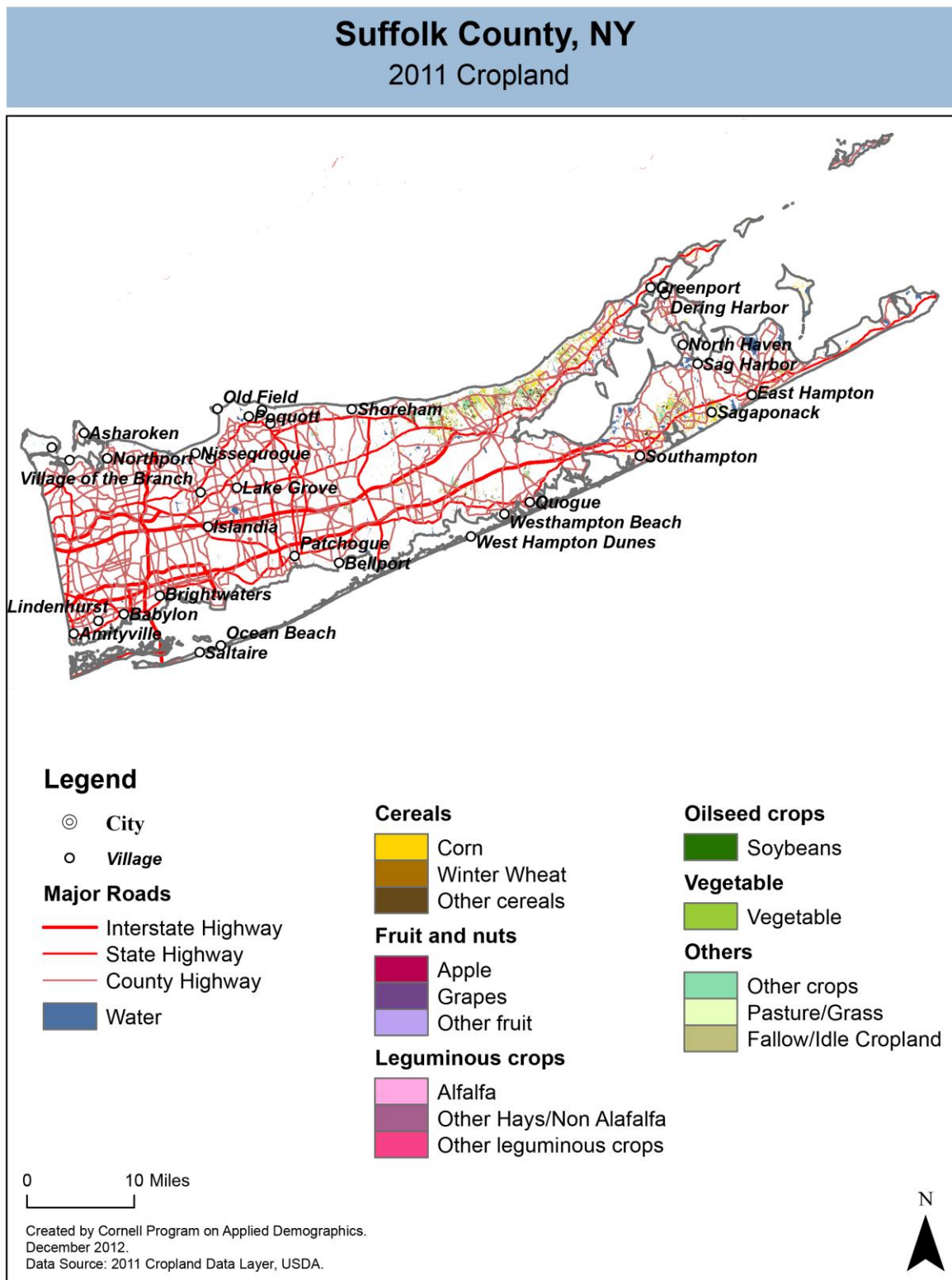
Source: National Agricultural Statistics Service – Annual Statistical bulletin

### 12.2 Farm Operator Characteristics

	Principal Operator		
	Total	Male	Female
<b>Number of farms</b>	585	460	125
Average size of farm (acres)	59	69	20
PRIMARY OCCUPATION			
Farming	377	296	81
Other	208	164	44
AGE			
Under 45	89	64	25
45 to 64 years	337	265	72
65 years and over	159	131	28
Average age (years)	56.5	57.1	54
YEARS ON PRESENT FARM			
Less than 3 years	15	9	6
3 to 4 years	29	19	10
5 to 9 years	97	75	22
10 years or more	444	357	87

Source: 2007 Agricultural Census

## 12.3 Map of type of crop



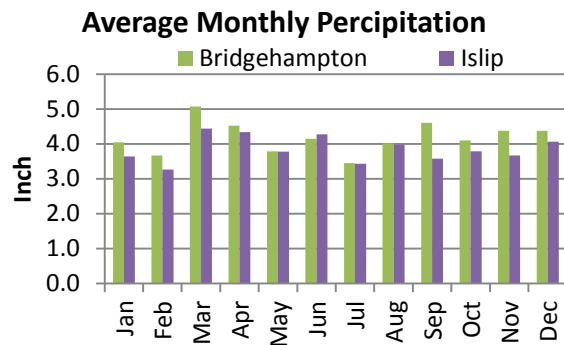
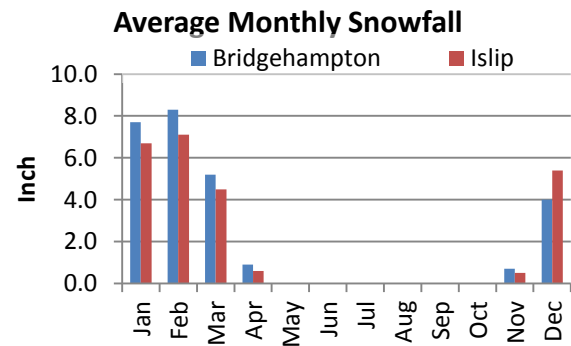
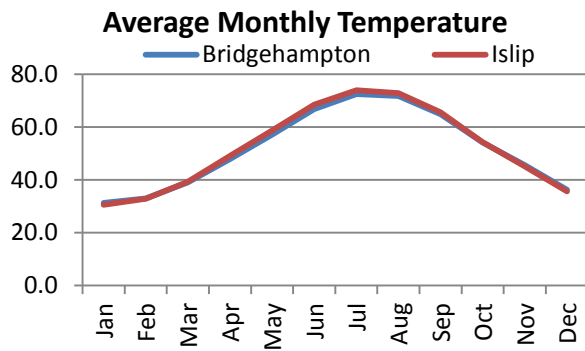


## 12.4 Estimated acreage by crop

	Acreage	%		Acreage	%
<b>Cereals</b>			<b>Fruit and nuts</b>		
Barley	-		Apples	-	
Corn	6,781	29.0%	Apricots	-	
Millet	-		Blueberries	-	
Oats	0.4	0.0%	Cherries	-	
Rye	2,810	12.0%	Cranberries	-	
Sorghum	-		Grapes	1,386	5.9%
Speltz	-		Nectarines	27	0.1%
Spring Wheat	-		Peaches	-	
Sweet Corn	209	0.9%	Plums	-	
Triticale	-		Prunes	-	
Winter Wheat	805	3.4%	Strawberries	-	
Dbl Crop WinWht/Corn	-		Walnuts	-	
<b>Leguminous crops</b>			<b>Beverage and spice crops</b>		
Alfalfa	99	0.4%	Herbs	-	
Other Hay/Non Alfalfa	1,144	4.9%	Peppers	-	
Dry Beans	-		<b>Trees</b>		
Peas	-		Christmas Trees	969	4.1%
Vetch	-		Other Tree Crops	-	
<b>Oilseed crops</b>			<b>Other crops</b>		
Soybeans	4.4	0.0%	Tobacco	-	
Sunflower	-		Misc Veggies & Fruits	-	
<b>Sugar crops</b>			Clover/Wildflowers	-	
Sugarbeets	-		Sod/Grass Seed	-	
<b>Root/tuber crops with high starch or inulin content</b>			Switchgrass	-	
Potatoes	3,298	14.1%	Dbl Crop Soybeans/Oats	-	
<b>Vegetables and melons</b>			Dbl Crop WinWht/Soybeans	-	
Asparagus	-		Other Crops	190	0.8%
Broccoli	-		<b>Pasture/Grass</b>	4,807	20.6%
Cabbage	-		<b>Fallow/Idle Cropland</b>	723	3.1%
Carrots	-				
Eggplants	-				
Onions	-				
Pumpkins	99	0.4%			
Squash	-				
Tomatoes	-				
Turnips	-				

Source: National Agricultural Statistics Service - Cropland Data Layer 2011

## 13 Climate



**Average length of freeze-free season**

	Last day of frost	First day of frost	Season length
Bridgehampton	April 25	October 19	175
Islip	April 12	October 28	198

Source: NOAA, Northeast Regional Climate Center at Cornell University. Averages 1981-2010

## 14 Glossary

**American Community Survey (ACS)** - The American Community Survey is an ongoing survey of the population that provides data every year on a variety of social and economic characteristics—age, sex, race, family and relationships, income and benefits, health insurance, education, veteran status, disabilities, where you work and how you get there, where you live and how much you pay for some essentials. The ACS replaced the information previously gathered by what was known as the “long form” of the decennial censuses. The ACS provides communities, companies and other institutions with current information they need to plan investments and services. Information from the survey generates data that help determine how more than \$400 billion in federal and state funds are distributed each year. Every estimate presented in the American Community Survey, as in other surveys, has an uncertainty associated with it. Often the magnitude of that uncertainty is expressed as the Margin of Error.

**Confidence Interval (CI)** - indication of the degree of uncertainty about a sample estimates. Confidence intervals have been traditionally reported at the 90, 95 and 99 percent levels. A 90 percent confidence interval can be interpreted, for example, roughly as providing 90 percent certainty that the interval defined by the upper and lower bounds contain the true value of the characteristic. If a Margin of Error is given, the lower bound of the confidence interval is equal to the estimate minus the Margin of Error and the upper bound is equal to the estimate plus the Margin of Error. (See further, Margin of Error definition below.)

**County subdivision or Minor Civil Division (MCD)** - The Census Bureau geography for primary administrative units below the county level in New York is collectively referred to as county subdivisions or minor civil divisions. These include towns, cities and Indian Reservations.

**Decennial Census** - the Census of the population and housing taken every 10 years in the United States, at the start of each decade, since 1790.

**Employed** – either “at work” or “with a job, but not at work”.

**Group Quarters Population** - all U.S. residents who live in group living facilities including correctional institutions, juvenile facilities, skilled nursing facilities, college residence halls, military barracks, group homes, and workers' dormitories.

**Household Population** - all U.S. residents who live in housing units such as single family homes, townhouses, apartments, and mobile homes.

**Intercensal Population Estimates** - estimates produced for the years between two decennial censuses when both the beginning and ending populations are known. They are produced once a decade by adjusting the existing time series of postcensal estimates for the entire decade to smooth the transition from one decennial census count to the next. They differ from the postcensal estimates that are released annually because the difference between the April 1 postcensal estimate and April 1 census count for the end of the decade is redistributed across the estimates for that decade. For dates when both postcensal and intercensal estimates are available, intercensal estimates are preferred.

**Labor Force** - consists of people classified as employed or unemployed.

**Margin of Error (MOE)** - a measure of the precision of an estimate at a given level of confidence. The confidence level of a margin of error indicates the likelihood that the difference between the population value (which you

would get if you could measure the whole population instead of a sample) and the estimate is less than or equal to the margin of error. The range from the estimate minus the margin of error to the estimate plus the margin of error is called the confidence interval. All ACS estimates are published with their margins of error at the 90 percent confidence level. Margins of error are useful in assessing the reliability of estimates and whether differences between estimates are significant.

**NAICS** - The North American Industry Classification System or NAICS is used by business and government to classify business establishments according to type of economic activity (process of production).

**Numeric Population Change** - difference between the population of an area at the beginning and end of a time period. It is computed by taking the difference between the population at one point in time (t1) and some future time (t2).

**Percent Population Change** - difference between the population of an area at the beginning and end of a time period, expressed as a percentage of the beginning population. It is computed by dividing the population change (t2 - t1) by t1 and multiplying the result by 100.

**Population Estimates** - The calculated number of people living in an area as of a specified point in time, usually July 1st. The estimated population is calculated using a component of change model that incorporates information on natural increase (births, deaths) and net migration (net domestic migration, net international migration) that has occurred in an area since the latest decennial census. A procedure for estimating the current population using a procedure involving a "base population" value at time t -1, adding to that the births during the interval t-1 to t, subtracting the deaths during that interval t-1 to t, and then adding the net domestic and net international migration that occurred during that interval.

**Population Density** - Total number of people per areal unit like a square mile or square kilometer.

**Population Pyramids** - A graphical way of portraying a population's age and sex composition at a given slice in time. The first horizontal bar, constituting the base of the graph, is the youngest age group (typically 0-4) with the number of males in that age group on the left and the number of females in that age group on the right. On top of that age group is another horizontal bar for the next age group (e.g. 5-9) and so forth with the top bar typically for those aged 75 and over. In a population with lots of births and deaths, the shape typically forms a pyramid with a broad base and a narrow top. It is one of the most basic ways to understand population change over time as well as between different geographic units of a similar status (e.g. counties).

**Postcensal Estimates** - estimates produced for the years after a decennial census when only the beginning population is known. They are produced and revised each year, targeted to July 1 of that year.

**Projection** - estimated population at some future time based on assumptions about births, deaths, migration, and ages.

**Race/Ethnicity** - the Census Bureau collects racial data in accordance with guidelines provided by the U.S. Office of Management and Budget (OMB), and these data are based on self-identification. The racial categories included in the census questionnaire generally reflect a social definition of race recognized in this country and not an attempt to define race biologically, anthropologically, or genetically. In addition, it is recognized that the categories of the race item include racial and national origin or sociocultural groups. People may choose to report more than one race to indicate their racial mixture, such as "American Indian" and "White." People who identify their origin as Hispanic, Latino, or Spanish may be of any race. OMB requires five minimum categories: White, Black or African American, American Indian or Alaska Native, Asian, and Native Hawaiian or Other Pacific

Islander. Hispanics may be classified as white or black. So we generally separate them out as an ethnic group first.

**Unemployed** – Not employed, but actively looking for work and available to accept a job.

**Unemployment rate** – Fraction of the Labor Force that is unemployed.

**Urban Area** – A densely settled area with at least 2,500 people. If the total number of people is less than 50,000 the Census Bureau calls it an Urban Cluster, otherwise an Urbanized Area.

**Vintage** - each year, the U.S. Census Bureau produces and publishes estimates of the population for each state and county, as well as the nation as a whole. These are called “vintages.” In producing these vintages, the Bureau utilizes administrative data from a number of sources to estimate 1) the change in population since the most recent decennial census, and 2) the population for each year since the most recent decennial census. With each annual release of population estimates (vintage), the entire time series of estimates beginning on April 1, 2010 is revised and updated.

## 15 References

Suffolk County homepage: <http://www.suffolkcountyny.gov/>

At Cornell:

- Cornell Cooperative Extensions (CCE)  
Home page: <http://www.cce.cornell.edu>
  - Suffolk local office: <http://ccesuffolk.org/>
- Program on Applied Demographics (PAD)  
URL: <http://pad.human.cornell.edu/>
- Community and Regional Development Institute (CaRDI)  
URL: <http://devsoc.cals.cornell.edu/cals/devsoc/outreach/cardi/index.cfm>

Data sources and background information:

- U.S. Census Bureau - general
  - QuickFacts: <http://quickfacts.census.gov/qfd/states/36/36103.html>
  - QuickLinks: <http://quickfacts.census.gov/qfd/states/36/36103lk.html>
  - American FactFinder: <http://factfinder2.census.gov>
- U.S. Census Bureau - population
  - Decennial Census
    - Background: <http://2010.census.gov/2010census/>
    - Demographic Profile: [http://factfinder2.census.gov/bkmk/table/1.0/en/DEC/10\\_SF1/SF1DP1/0500000US36103](http://factfinder2.census.gov/bkmk/table/1.0/en/DEC/10_SF1/SF1DP1/0500000US36103)
  - American Community Survey (ACS)
    - Background: <http://www.census.gov/acs/www/>
    - Social Data Profile: [http://factfinder2.census.gov/bkmk/table/1.0/en/ACS/10\\_5YR/DP02/0500000US36103](http://factfinder2.census.gov/bkmk/table/1.0/en/ACS/10_5YR/DP02/0500000US36103)
    - Economic Data Profile: [http://factfinder2.census.gov/bkmk/table/1.0/en/ACS/10\\_5YR/DP03/0500000US36103](http://factfinder2.census.gov/bkmk/table/1.0/en/ACS/10_5YR/DP03/0500000US36103)
    - Housing Data Profile: [http://factfinder2.census.gov/bkmk/table/1.0/en/ACS/10\\_5YR/DP04/0500000US36103](http://factfinder2.census.gov/bkmk/table/1.0/en/ACS/10_5YR/DP04/0500000US36103)
    - Demographics Data Profile: [http://factfinder2.census.gov/bkmk/table/1.0/en/ACS/10\\_5YR/DP05/0500000US36103](http://factfinder2.census.gov/bkmk/table/1.0/en/ACS/10_5YR/DP05/0500000US36103)
  - Population estimates: <http://www.census.gov/popest/estimates.html>
- U.S. Census Bureau – Small Area Income & Poverty Estimates (SAIPE)
  - <http://www.census.gov/did/www/saipe/>
- U.S. Census Bureau - Public Use Quarterly Workforce Indicators (QWI) – annual averages
  - <http://www2.vrdc.cornell.edu/news/data/qwi-public-use-data/>
- Bureau Labor Statistics (BLS) – Local Area Unemployment Statistics: <http://www.bls.gov/lau/>
- NY Department of Labor -
  - Labor statistics: <http://www.labor.ny.gov/stats/>
  - Quarterly Census of Employment and Wages (QCEW): <http://www.labor.ny.gov/stats/lqcew.shtm>
- Bureau of Economic Analysis (BEA) – Local Area Personal Income and Employment: <http://bea.gov/iTable/iTable.cfm?ReqID=70&step=1>

- USDA Census of Agriculture
  - 2007
    - Home page: <http://www.agcensus.usda.gov/Publications/2007/index.php>
    - County profile: [http://www.agcensus.usda.gov/Publications/2007/Online\\_Highlights/County\\_Profiles/New\\_York/cp36103.pdf](http://www.agcensus.usda.gov/Publications/2007/Online_Highlights/County_Profiles/New_York/cp36103.pdf)
    - Race, Ethnicity and Gender Profiles: [http://www.agcensus.usda.gov/Publications/2007/Online\\_Highlights/Race\\_Ethnicity\\_and\\_Gender\\_Profiles/New\\_York/cpd36103.pdf](http://www.agcensus.usda.gov/Publications/2007/Online_Highlights/Race_Ethnicity_and_Gender_Profiles/New_York/cpd36103.pdf)
- USDA National Agricultural Statistics Service (NASS)
  - Home page: <http://www.nass.usda.gov/index.asp>
  - New York Statistical Bulletins: [http://www.nass.usda.gov/Statistics\\_by\\_State/New\\_York/Publications/Annual\\_Statistical\\_Bulletin/](http://www.nass.usda.gov/Statistics_by_State/New_York/Publications/Annual_Statistical_Bulletin/)
  - Cropland Data Layer – CropScape: <http://nassgeodata.gmu.edu/CropScape/>
- USDA Agricultural Research Service – Plant Hardness Zone Map: <http://planthardiness.ars.usda.gov/PHZMWeb/>
- NOAA, Northeast Regional Climate Center at Cornell University
  - Home page: <http://www.nrcc.cornell.edu/index.html>

Alternative sites for data retrieval:

- The Nelson A. Rockefeller Institute of Government – New York State Statistical Yearbooks [http://www.rockinst.org/nys\\_statistics/](http://www.rockinst.org/nys_statistics/)
- Headwaters Economics: Economic Profile System – Human Dimensions Toolkit <http://headwaterseconomics.org/tools/eps-hdt>
- National Historical Geographic Information System (NHGIS) <https://www.nhgis.org/>
- Social Explorer <http://www.socialexplorer.com/pub/home/home.aspx>
- Missouri Census Data Center <http://mcdc.missouri.edu/>
- DataFerret <http://dataferrett.census.gov/>
- Investigative Reporters and Editors (IRE) Census project <http://census.ire.org/>